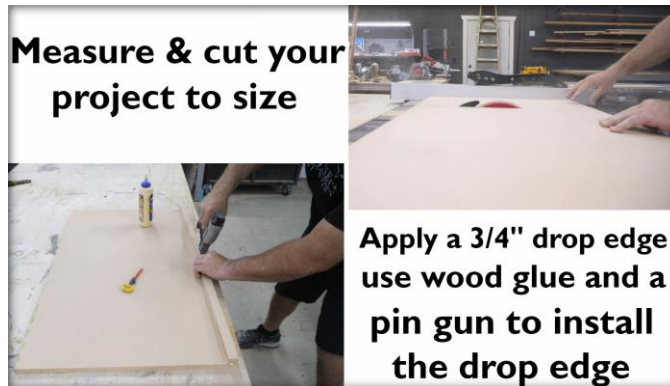


Smokey Mountain Marble

Step-by-Step



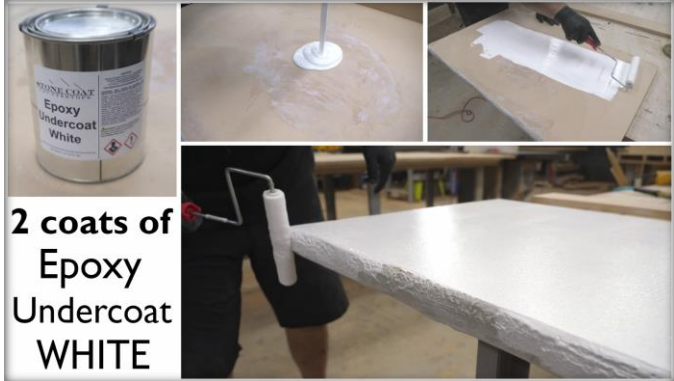


Rock Face Edge

Use a gloved hand to apply mixed Bondo to the edge of your project.



Use a sander with 220 grit sandpaper to remove any sharp or high points



2 coats of Epoxy Undercoat WHITE



Lightly sand the dried undercoat with 220 grit

Next Step EPOXY!



Measure & Mix Epoxy:
 3 ounces of epoxy per sqft
 1:1 Ratio
 Mix for 2 min



Use a drill and mixing paddle to mix or use a mixing stick by hand



Pour out mixed epoxy into 4 separate mixing cups
 Add additives and mix with a paint stick




Use the dyed black epoxy to apply a thin wash coat of epoxy to help meld & create natural movement



Use a paint stick or tounge depressor to apply the thin wash



Randomly pour out the epoxy on your project
 Use your gloved hand to meld the colors






CLEAR COAT

Chop

Edges

Torch

Chop the top with the heel of the brush

Use the Chop Brush to apply clear epoxy to the edges

Remove air incorporated into the epoxy while mixing with a propane torch

**STONE COAT
COUNTERTOPS**

**Enjoy Your
New Epoxy
Countertops!**