



Use Spray Paint to tint the the clear mixed Epoxy

Spray into the Epoxy for 8-10 seconds. Mix the paint & Epoxy with a paint stick



After mixing, remove the paint stick to check how transparent the Epoxy is



Spray in color and mix the Epoxy until the opacity desired is achieved

Pro Tip:

Mix multiple colors of spray paint to create a custom color to fit your project

Your Color Choice is Unlimited!

Create Realistic Depth



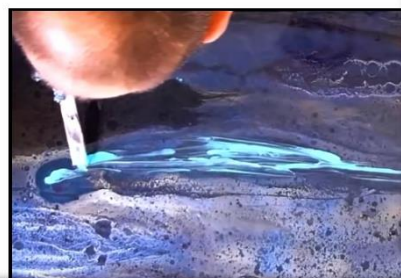
Use clear Epoxy and apply blobs and veins over the project.

Pour the Epoxy out of the cup or use a paint stick to apply clear thin spider veins

Add clear Epoxy to give your vein realistic depth, this also helps the additives move and meld together



Layer spray paints, base tints, and metallic powders into the clear epoxy. The choice is yours, the clear epoxy will help the additives work together to create a stunning countertop





Use a propane torch or heat gun to move and fracture the additives. This will bring your vein to Life!

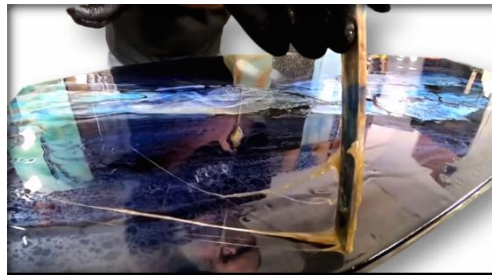


Fog your project with spray paint to blend and soften the countertop

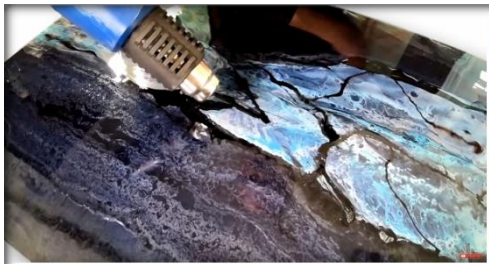


Let the Epoxy thicken in the mixing bucket, use a paint stick and mix the epoxy to check how thick it is.

Thickened epoxy acts completely different, when applied the epoxy spider veins will stay right where you apply them.



Use a second color of thickened epoxy to create more natural stone fracture lines to enhance your project



Use a propane torch and a heat gun to move and meld the thickened Epoxy fracture lines





Allow the epoxy to become sticky and thick before starting this technique.

Use a 2' section of 3mil plastic, lay the plastic down, lightly tap to make contact then slowly pull up on the plastic



This realistic stone look is easy to replicate & create using the 3mil plastic epoxy technique

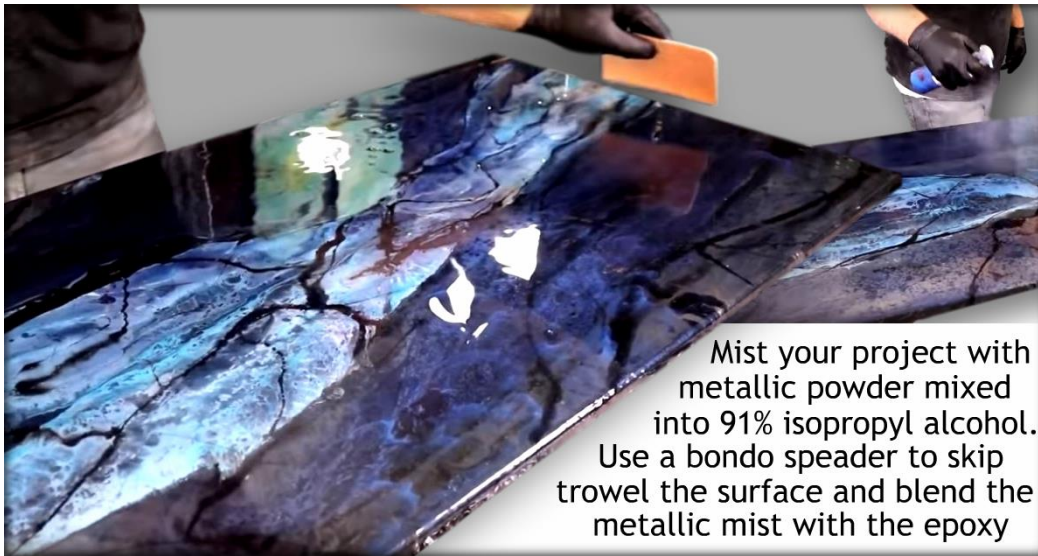


Let the project fully dry then sand with 220 grit to create a mechanical bond

Use 91% Isopropyl Alcohol & a paper towel to clean the dust



Apply a Clear Coat of Epoxy



Mist your project with metallic powder mixed into 91% isopropyl alcohol. Use a bondo spreader to skip trowel the surface and blend the metallic mist with the epoxy